



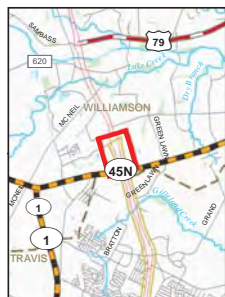
I-35 Capital Area Improvement Program

Corridor Implementation Plan

Appendix A










Notable Environmental Constraints

This Page Intentionally Left Blank



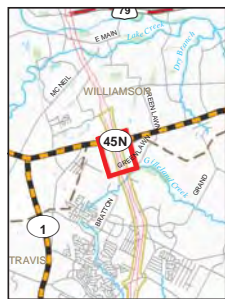
IH 35 CAIP Travis County Phase 2 Implementation Plan

Segment 1 -- Page 1 of 9

- | | |
|---|--|
|  Right-of-Way |  Study Area |
|  Public Facilities |  Park |
|  Hospitals |  Cemetery |
|  Medical Centers |  Historical District/Property |
|  Schools | |

Notable Environmental Factors

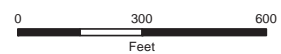


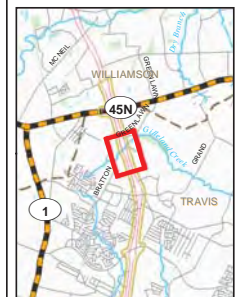
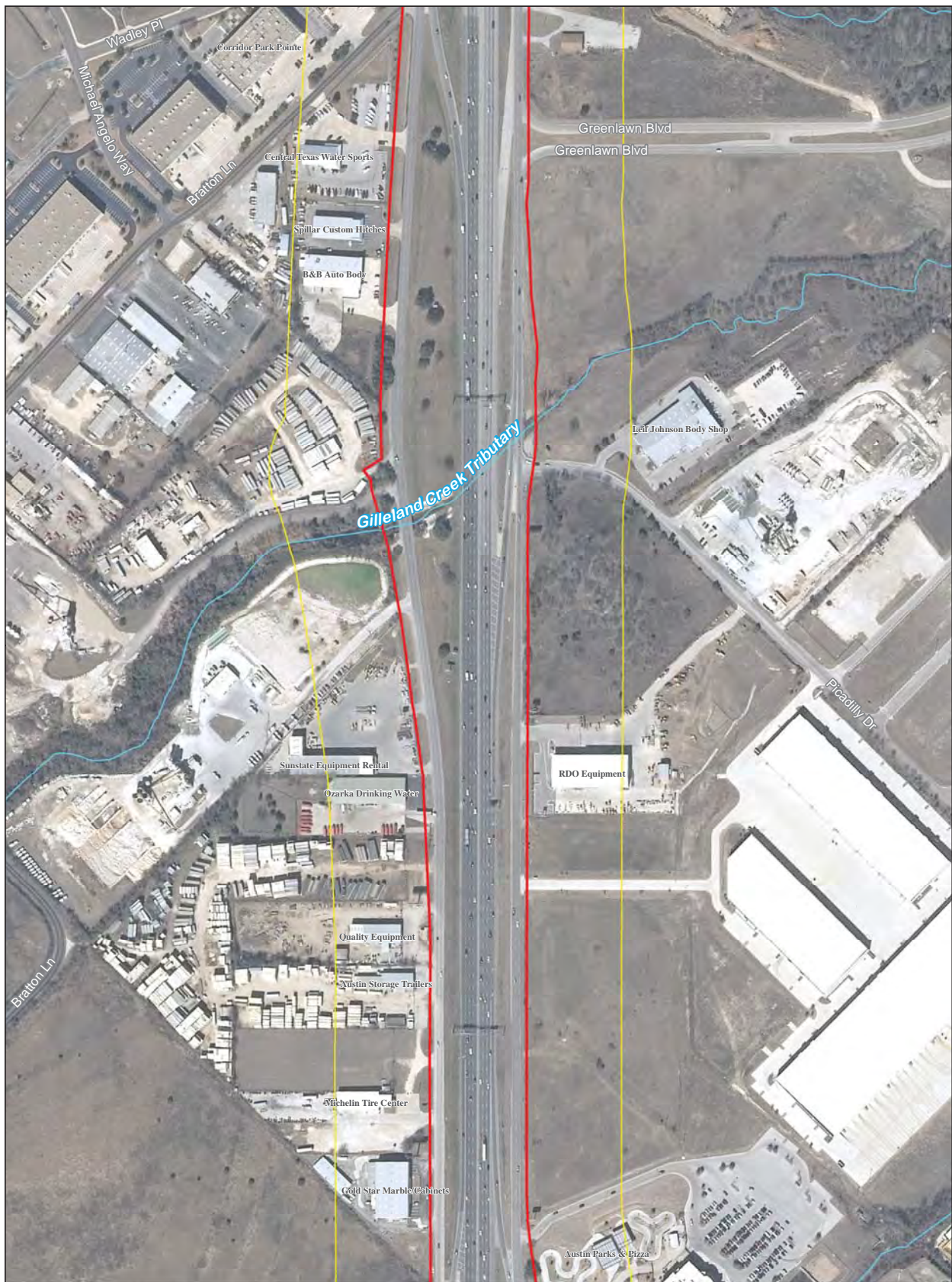


IH 35 CAIP Travis County Phase 2 Implementation Plan

- Right-of-Way
- Study Area
- PF Public Facilities
- Park
- H Hospitals
- Cemetery
- M Medical Centers
- Historical District/Property
- S Schools

Notable Environmental Factors



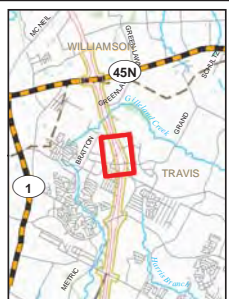


IH 35 CAIP Travis County Phase 2 Implementation Plan

- Right-of-Way
- Study Area
- PF** Public Facilities
- H** Hospitals
- M** Medical Centers
- S** Schools
- Park
- Cemetery
- Historical District/Property

Notable Environmental Factors

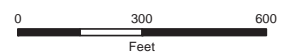


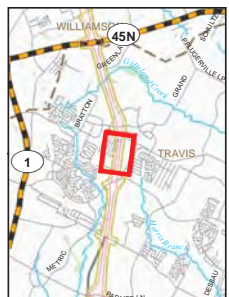


IH 35 CAIP Travis County Phase 2 Implementation Plan

- Right-of-Way
- Study Area
- PF Public Facilities
- P Park
- H Hospitals
- C Cemetery
- M Medical Centers
- HD Historical District/Property
- S Schools

Notable Environmental Factors



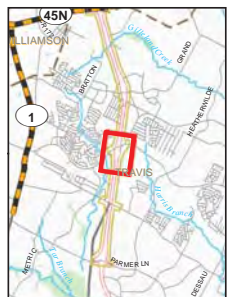
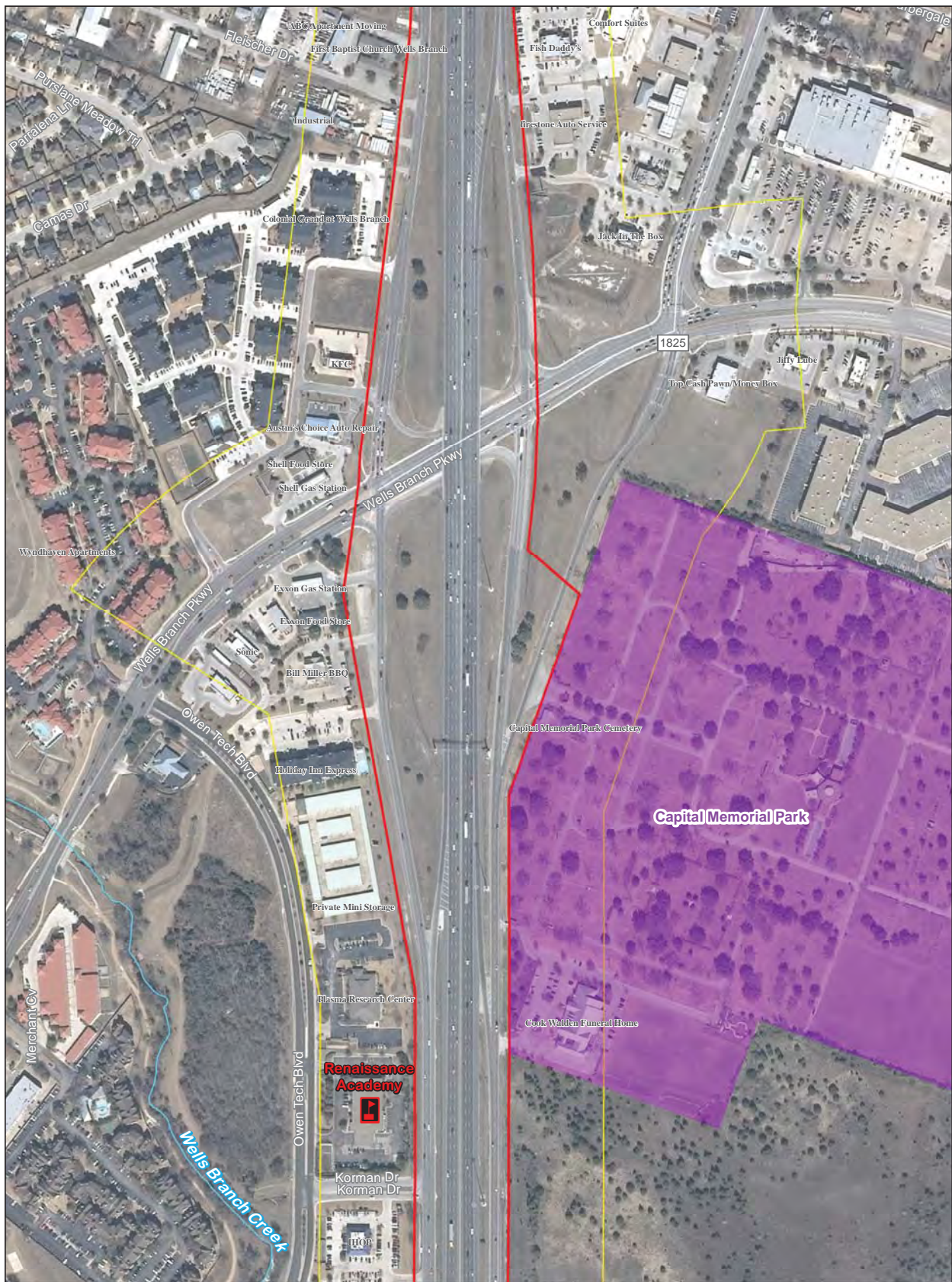


IH 35 CAIP Travis County Phase 2 Implementation Plan

- Right-of-Way
- Study Area
- PF Public Facilities
- H Hospitals
- M Medical Centers
- S Schools
- P Park
- C Cemetery
- HD Historical District/Property

Notable Environmental Factors



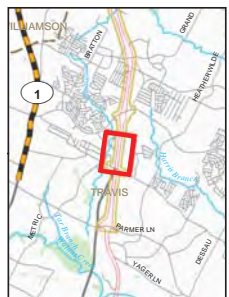
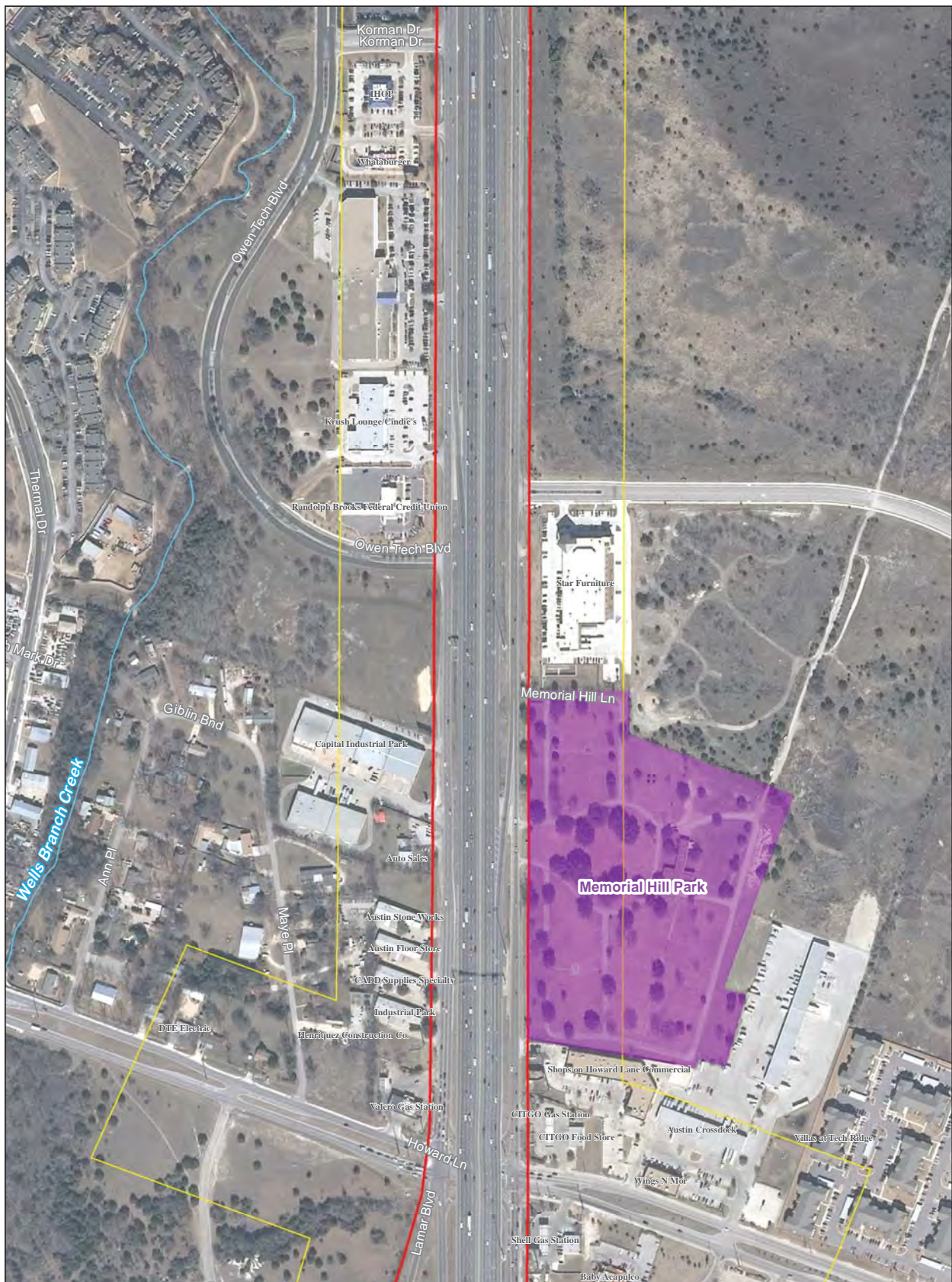


IH 35 CAIP Travis County Phase 2 Implementation Plan

- Right-of-Way
- Study Area
- PF** Public Facilities
- H** Hospitals
- M** Medical Centers
- S** Schools
- Park
- Cemetery
- Historical District/Property

Notable Environmental Factors

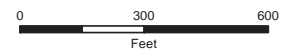


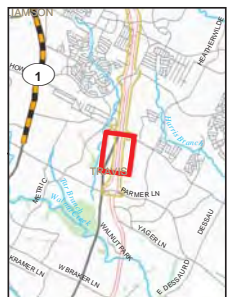
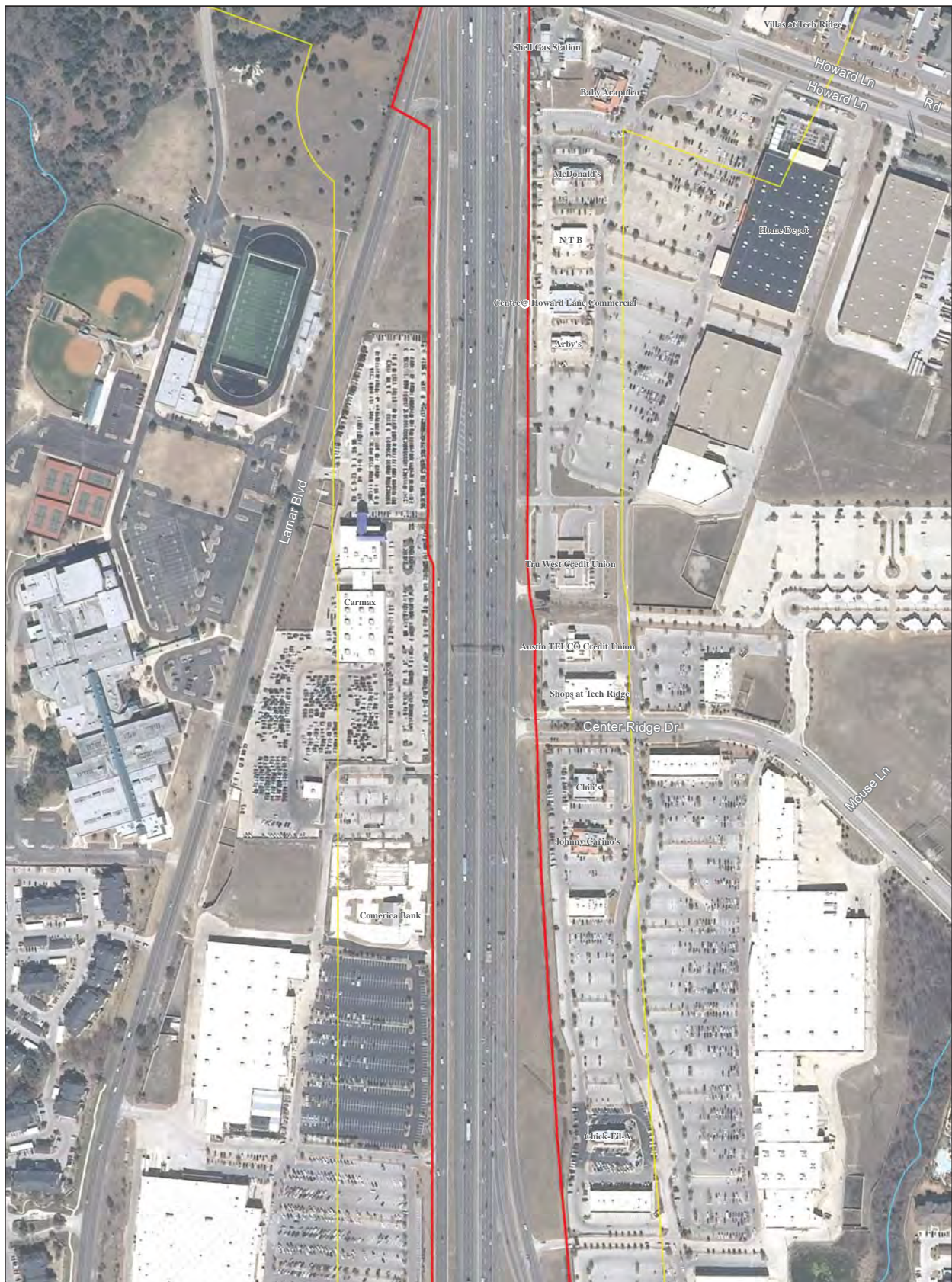


IH 35 CAIP Travis County Phase 2 Implementation Plan

- Right-of-Way
- Study Area
- PF** Public Facilities
- H** Hospitals
- M** Medical Centers
- S** Schools
- Park
- Cemetery
- Historical District/Property

Notable Environmental Factors

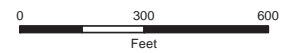


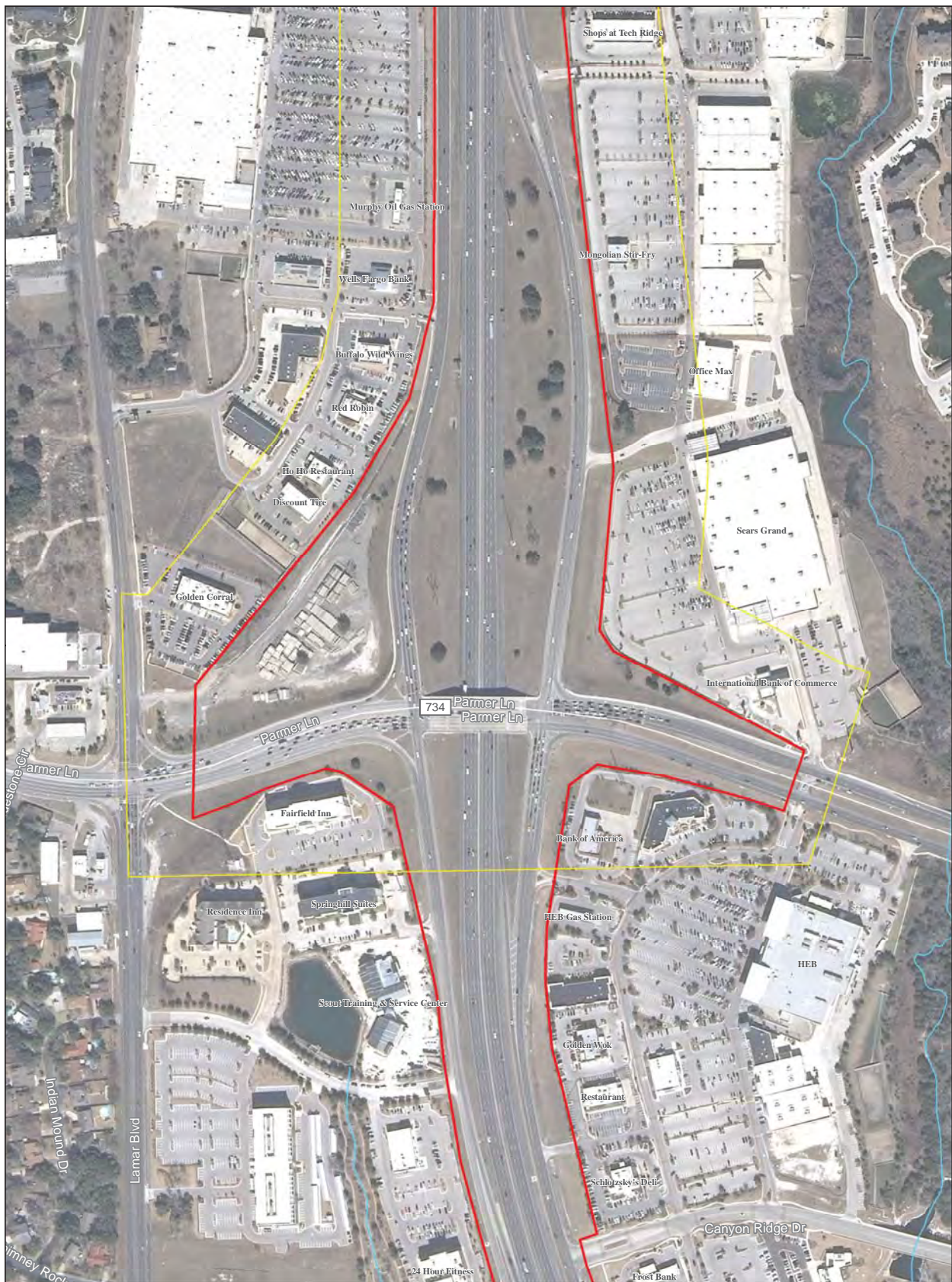


IH 35 CAIP Travis County Phase 2 Implementation Plan

- Right-of-Way
- Study Area
- PF** Public Facilities
- H** Hospitals
- M** Medical Centers
- S** Schools
- Park
- Cemetery
- Historical District/Property

Notable Environmental Factors

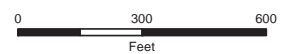


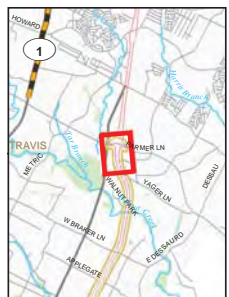


IH 35 CAIP Travis County Phase 2 Implementation Plan

- Right-of-Way
- Study Area
- PF Public Facilities
- P Park
- H Hospitals
- C Cemetery
- M Medical Centers
- S Historical District/Property
- S Schools

Notable Environmental Factors





IH 35 CAIP Travis County Phase 2 Implementation Plan

- Right-of-Way
- Study Area
- PF** Public Facilities
- H** Hospitals
- M** Medical Centers
- S** Schools
- Park
- Cemetery
- Historical District/Property

Notable Environmental Factors





IH 35 CAIP Travis County Phase 2 Implementation Plan

- Right-of-Way
- Study Area
- PF** Public Facilities
- H** Hospitals
- M** Medical Centers
- S** Schools
- Park
- Cemetery
- Historical District/Property

Notable Environmental Factors





IH 35 CAIP Travis County Phase 2 Implementation Plan

- Right-of-Way
- Study Area
- PF** Public Facilities
- H** Hospitals
- M** Medical Centers
- S** Schools
- Park
- Cemetery
- Historical District/Property

Notable Environmental Factors

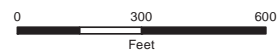


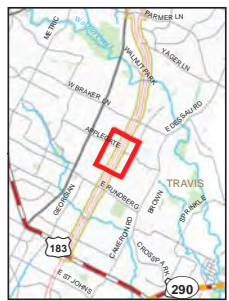


IH 35 CAIP Travis County Phase 2 Implementation Plan

- Right-of-Way
- Study Area
- PF** Public Facilities
- H** Hospitals
- M** Medical Centers
- S** Schools
- Park
- Cemetery
- Historical District/Property

Notable Environmental Factors

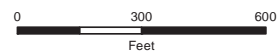


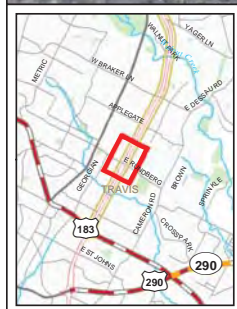


IH 35 CAIP Travis County Phase 2 Implementation Plan

- Right-of-Way
- Study Area
- PF Public Facilities
- H Hospitals
- M Medical Centers
- S Schools
- P Park
- C Cemetery
- HD Historical District/Property

Notable Environmental Factors

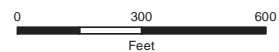


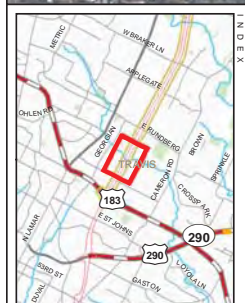


IH 35 CAIP Travis County Phase 2 Implementation Plan

- Right-of-Way
- Study Area
- PF Public Facilities
- P Park
- H Hospitals
- C Cemetery
- M Medical Centers
- D Historical District/Property
- S Schools

Notable Environmental Factors

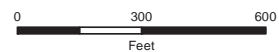




IH 35 CAIP Travis County Phase 2 Implementation Plan

- Right-of-Way
- Study Area
- PF** Public Facilities
- H** Hospitals
- M** Medical Centers
- S** Schools
- Park
- Cemetery
- Historical District/Property

Notable Environmental Factors

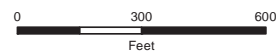


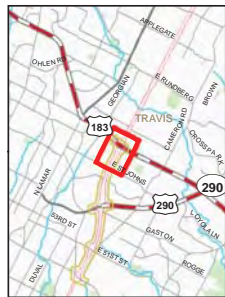
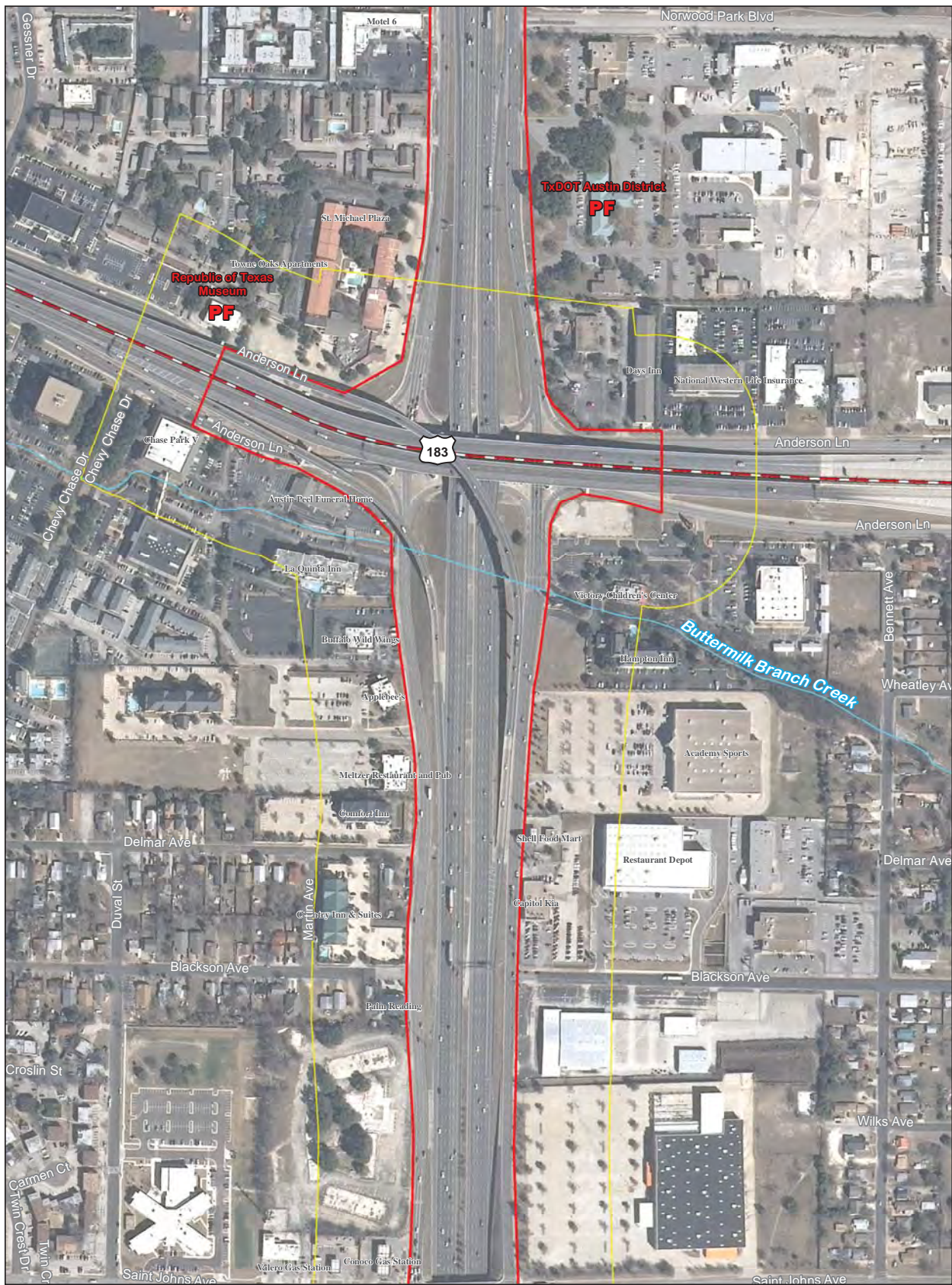


IH 35 CAIP Travis County Phase 2 Implementation Plan

- Right-of-Way
- Study Area
- PF Public Facilities
- Park
- H Hospitals
- Cemetery
- M Medical Centers
- Historical District/Property
- S Schools

Notable Environmental Factors

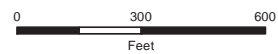


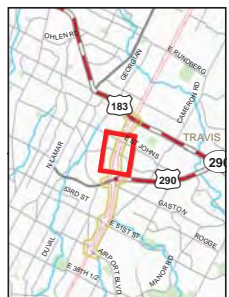


IH 35 CAIP Travis County Phase 2 Implementation Plan

- Right-of-Way
- - - Study Area
- PF Public Facilities
- Park
- H Hospitals
- Cemetery
- M Medical Centers
- Historical District/Property
- S Schools

Notable Environmental Factors



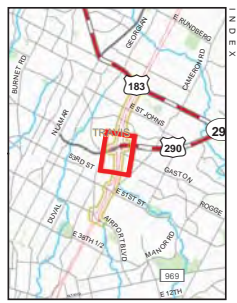
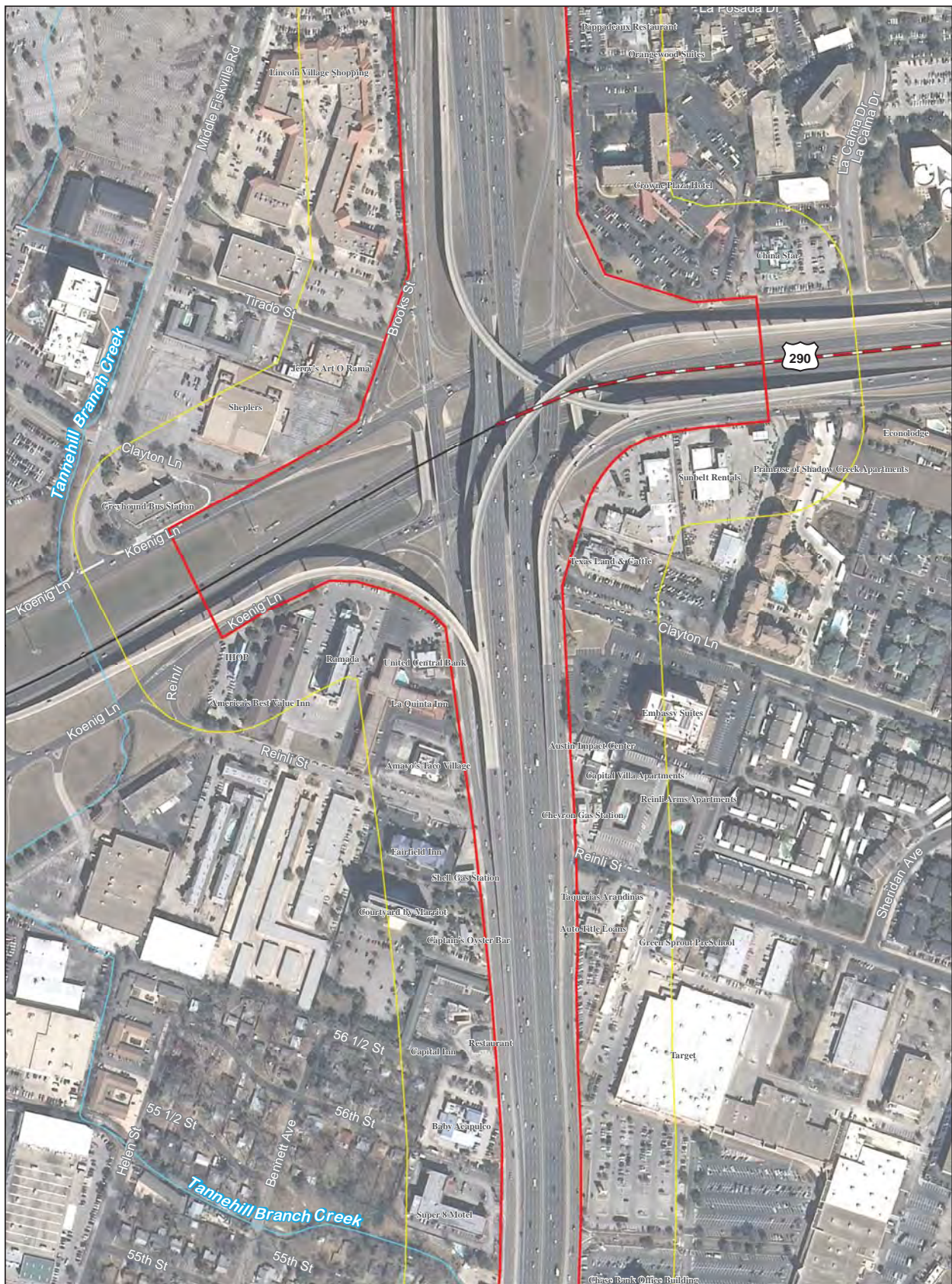


IH 35 CAIP Travis County Phase 2 Implementation Plan

- Right-of-Way
- Study Area
- PF Public Facilities
- Park
- H Hospitals
- Cemetery
- M Medical Centers
- Historical District/Property
- S Schools

Notable Environmental Factors





IH 35 CAIP Travis County Phase 2 Implementation Plan

- Right-of-Way
- Study Area
- Public Facilities
- Park
- Hospitals
- Cemetery
- Medical Centers
- Historical District/Property
- Schools

Notable Environmental Factors

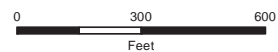


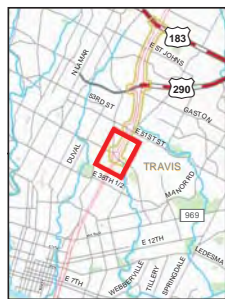
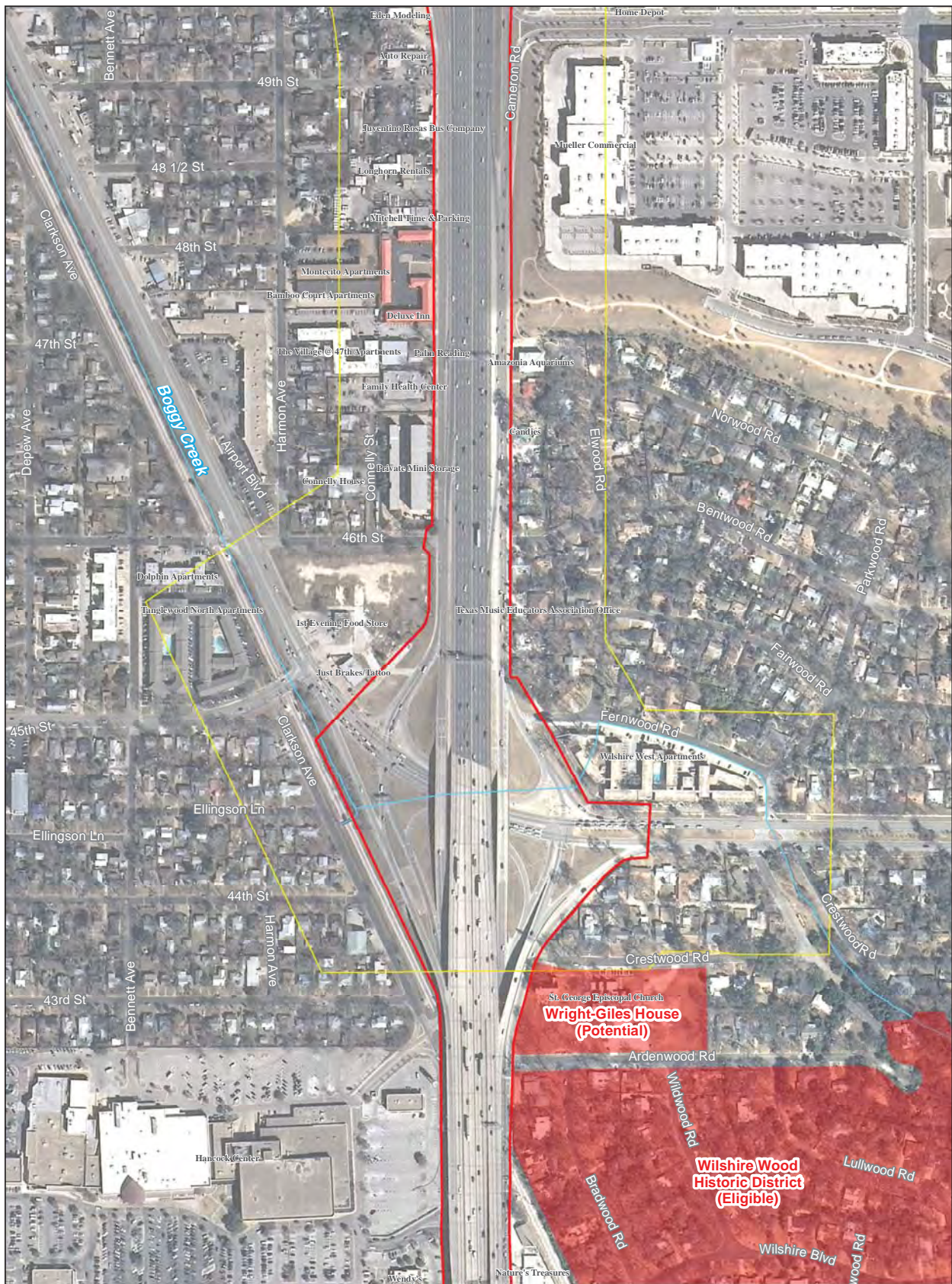


IH 35 CAIP Travis County Phase 2 Implementation Plan

- Right-of-Way
- Study Area
- PF Public Facilities
- H Hospitals
- M Medical Centers
- S Schools
- P Park
- C Cemetery
- HD Historical District/Property

Notable Environmental Factors

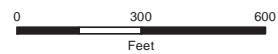


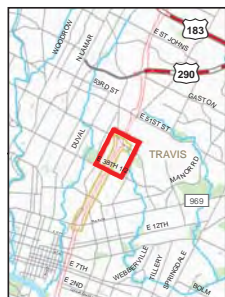


IH 35 CAIP Travis County Phase 2 Implementation Plan

- Right-of-Way
- Study Area
- PF Public Facilities
- P Park
- H Hospitals
- C Cemetery
- M Medical Centers
- S Historical District/Property
- S Schools

Notable Environmental Factors



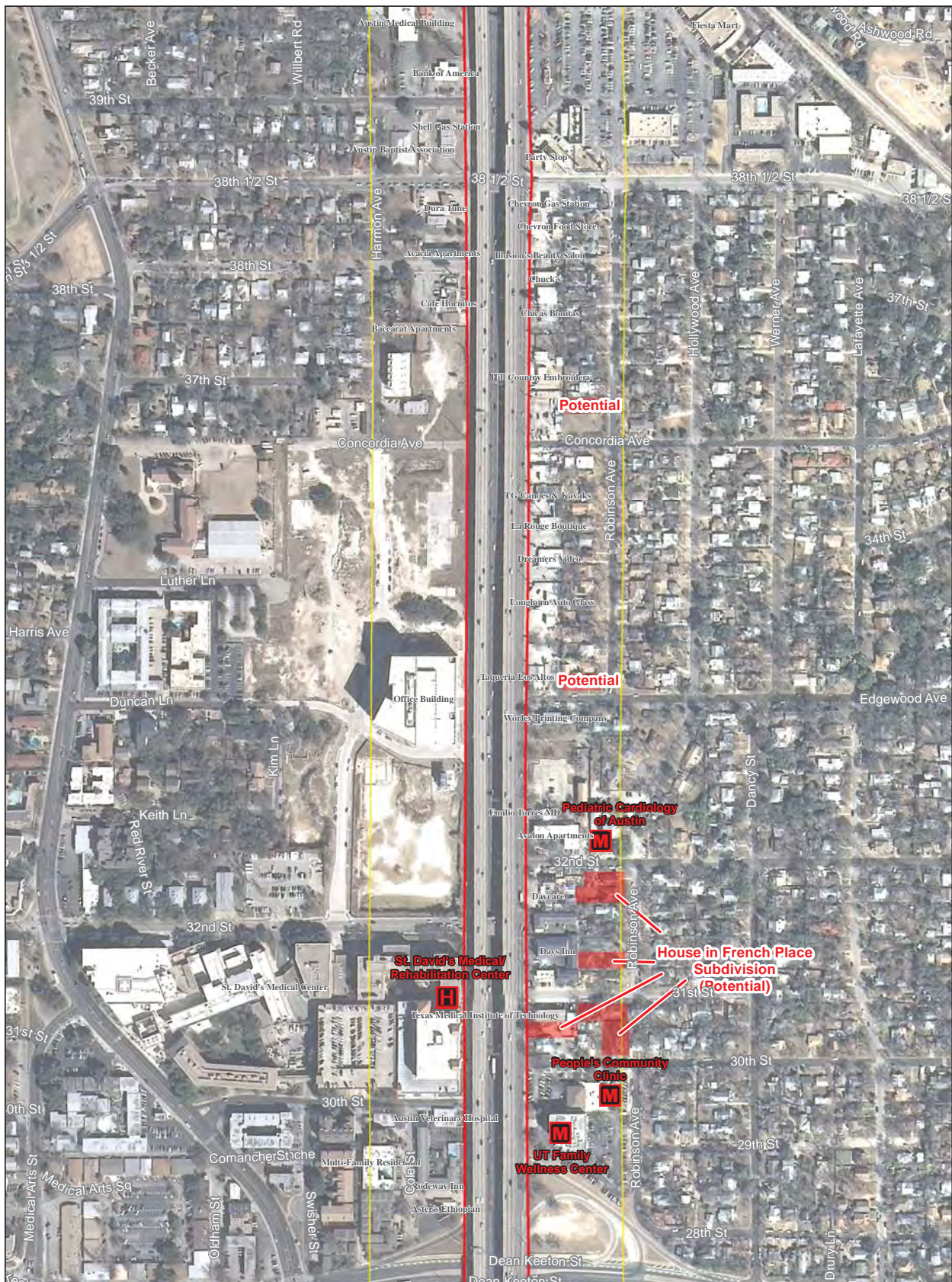


IH 35 CAIP Travis County Phase 2 Implementation Plan

- Right-of-Way
- Study Area
- PF Public Facilities
- P Park
- H Hospitals
- C Cemetery
- M Medical Centers
- S Historical District/Property
- S Schools

Notable Environmental Factors



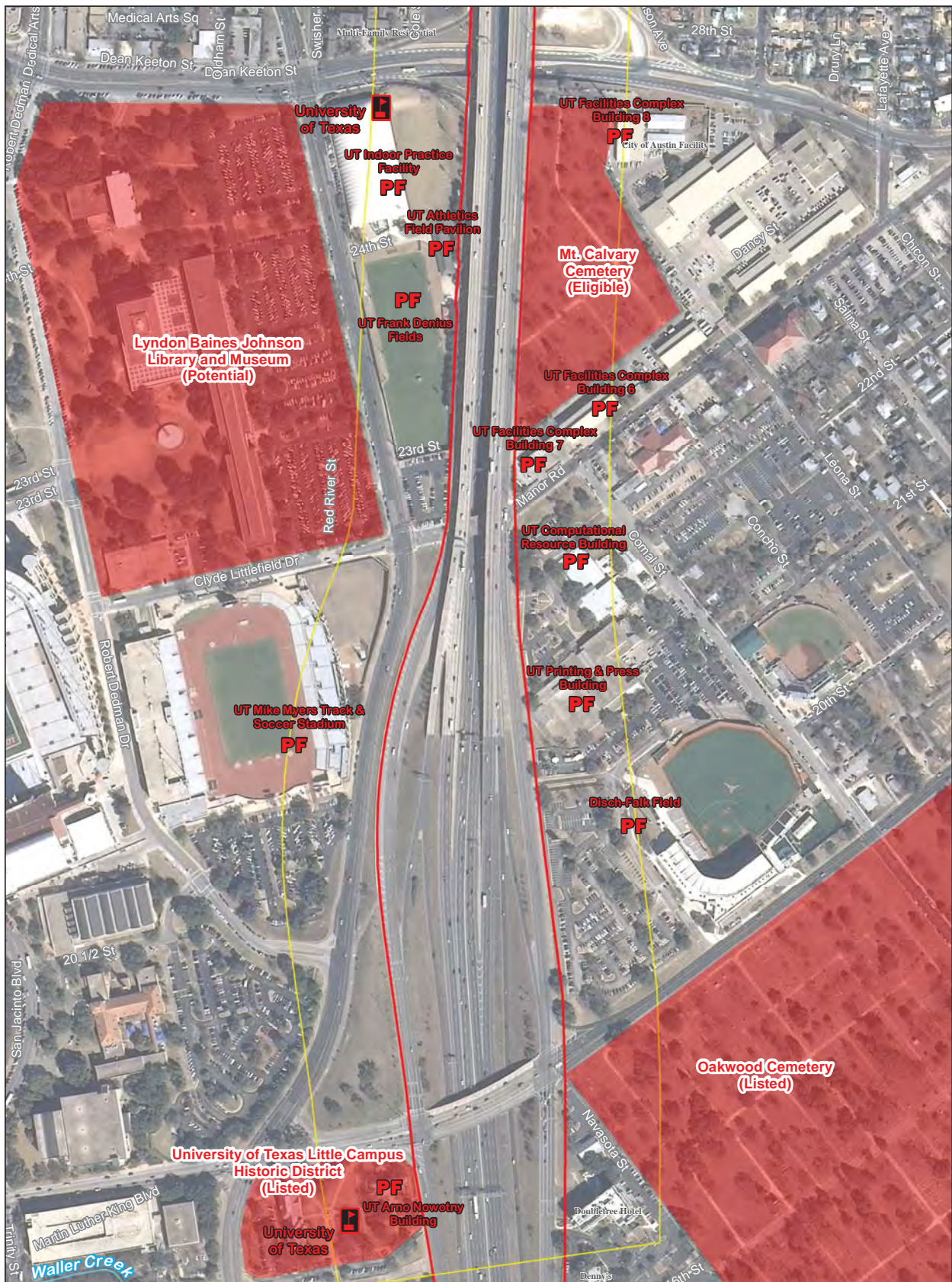


IH 35 CAIP Travis County Phase 2 Implementation Plan

- Right-of-Way
- Study Area
- PF Public Facilities
- P Park
- H Hospitals
- C Cemetery
- M Medical Centers
- S Schools
- Historical District/Property

Notable Environmental Factors



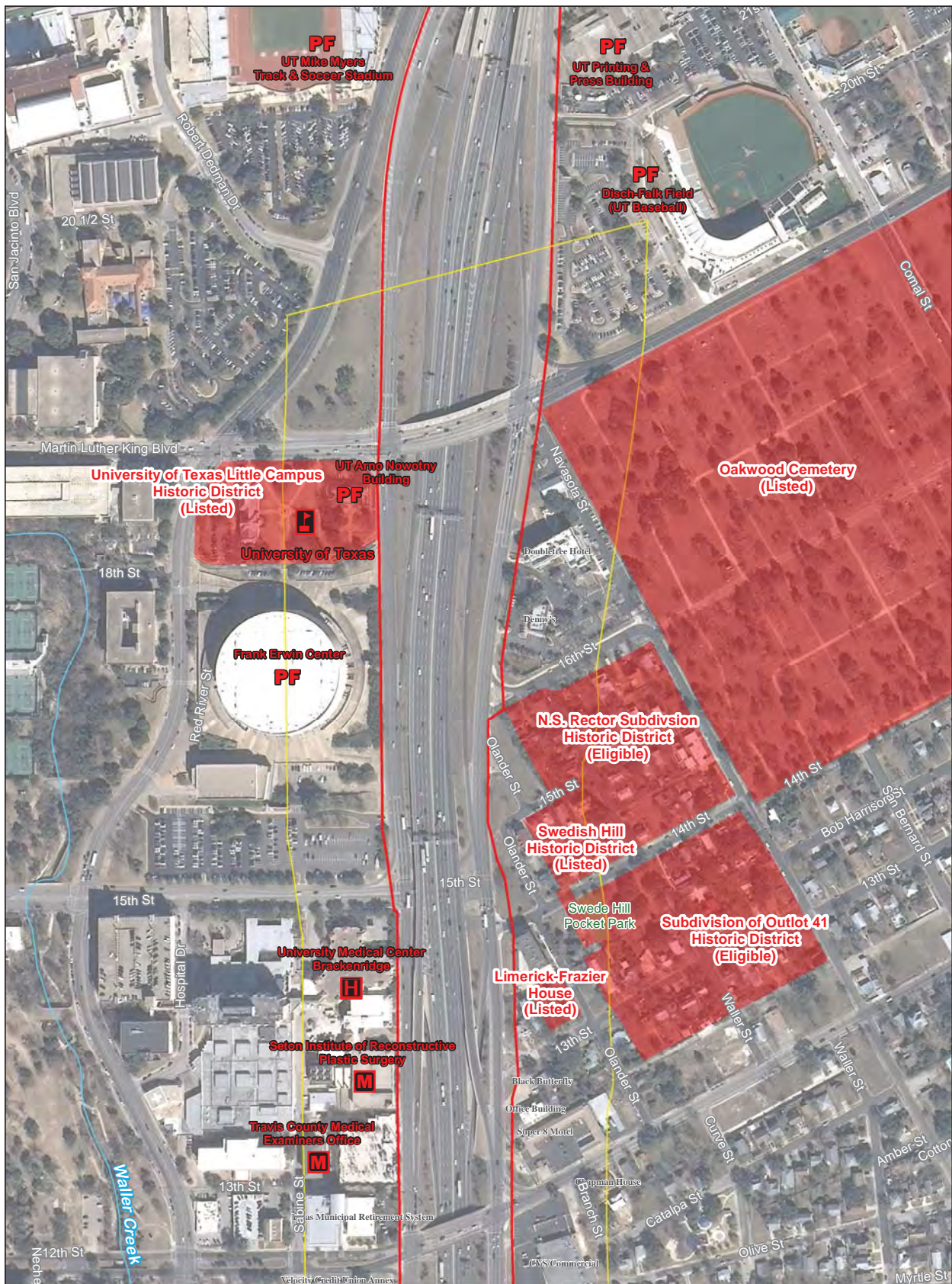


IH 35 CAIP Travis County Phase 2 Implementation Plan

- Right-of-Way
- Study Area
- PF** Public Facilities
- H** Hospitals
- M** Medical Centers
- S** Schools
- Park
- Cemetery
- Historical District/Property

Notable Environmental Factors



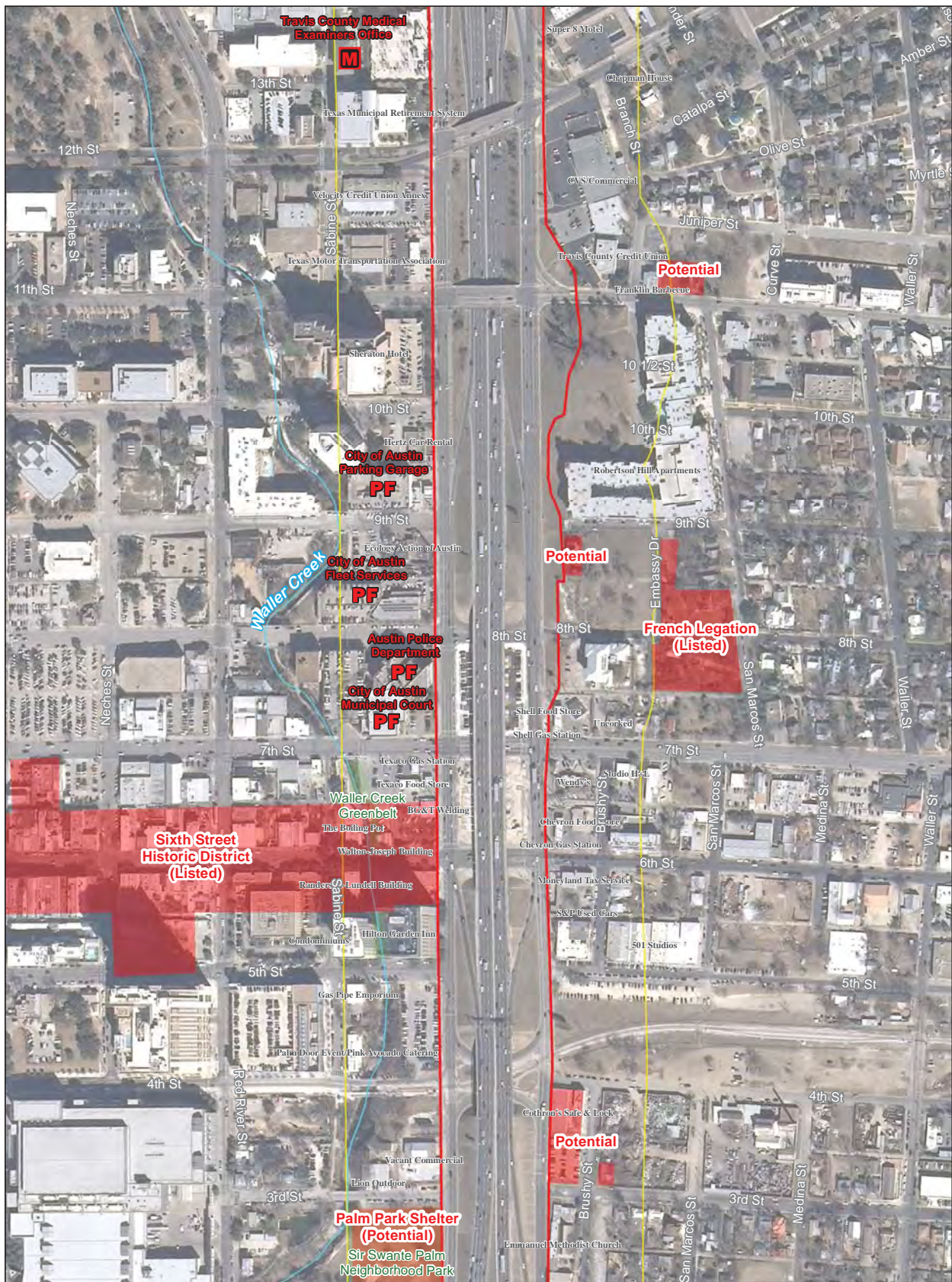


IH 35 CAIP Travis County Phase 2 Implementation Plan

- Right-of-Way
- Study Area
- PF Public Facilities
- Park
- H Hospitals
- Cemetery
- M Medical Centers
- Historical District/Property
- S Schools

Notable Environmental Factors



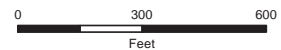


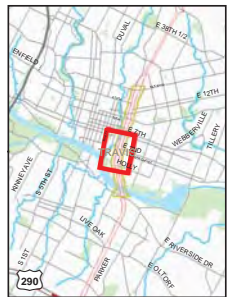
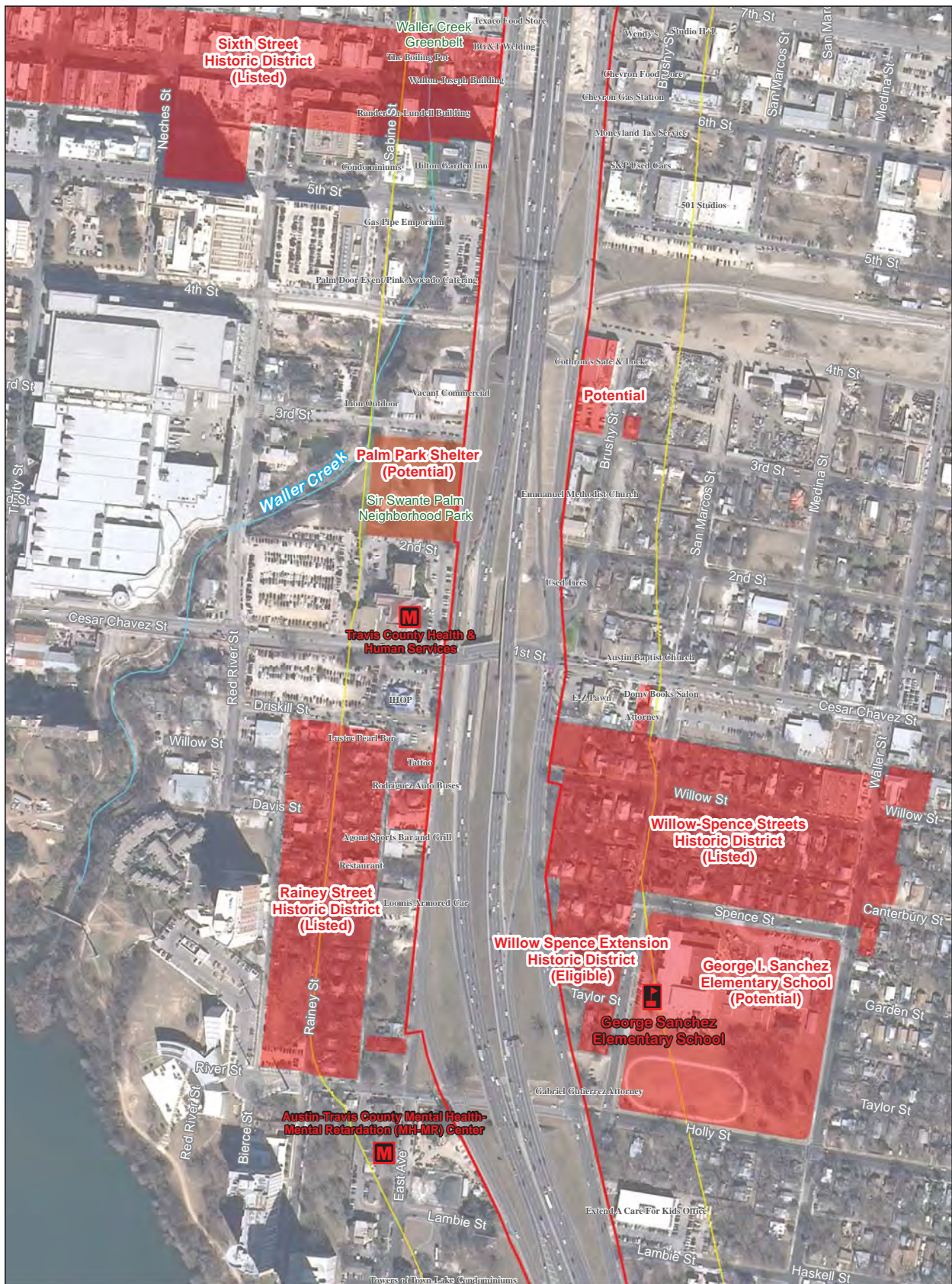
IH 35 CAIP Travis County Phase 2 Implementation Plan



- Right-of-Way
- Study Area
- PF** Public Facilities
- H** Hospitals
- M** Medical Centers
- S** Schools
- Park
- Cemetery
- Historical District/Property

Notable Environmental Factors

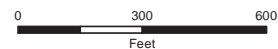


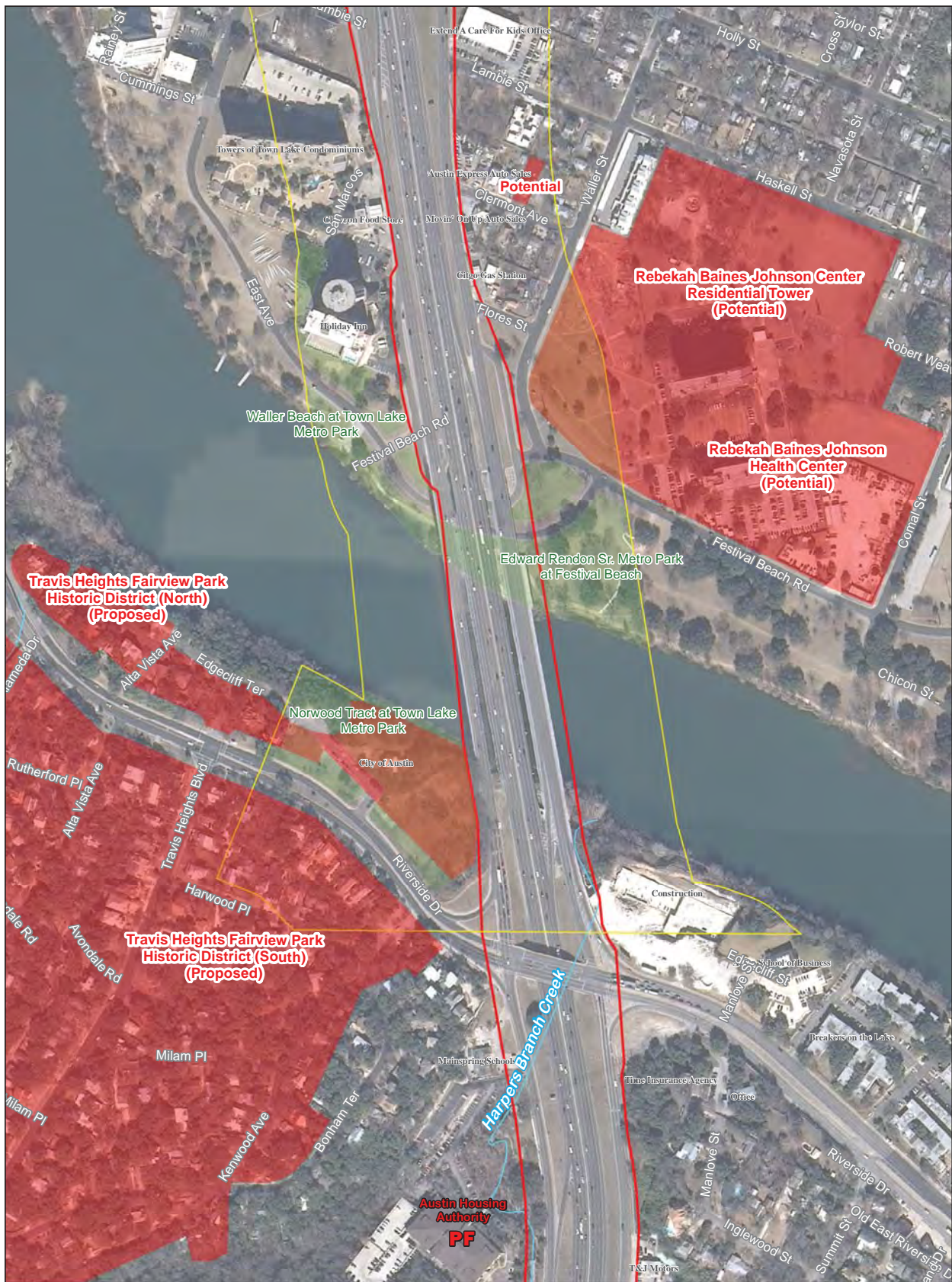


IH 35 CAIP Travis County Phase 2 Implementation Plan

- Right-of-Way
- Study Area
- PF Public Facilities
- P Park
- H Hospitals
- C Cemetery
- M Medical Centers
- S Schools
- Historical District/Property

Notable Environmental Factors

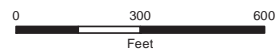




IH 35 CAIP Travis County Phase 2 Implementation Plan

- Right-of-Way
- Study Area
- PF Public Facilities
- Park
- H Hospitals
- Cemetery
- M Medical Centers
- Historical District/Property
- S Schools

Notable Environmental Factors



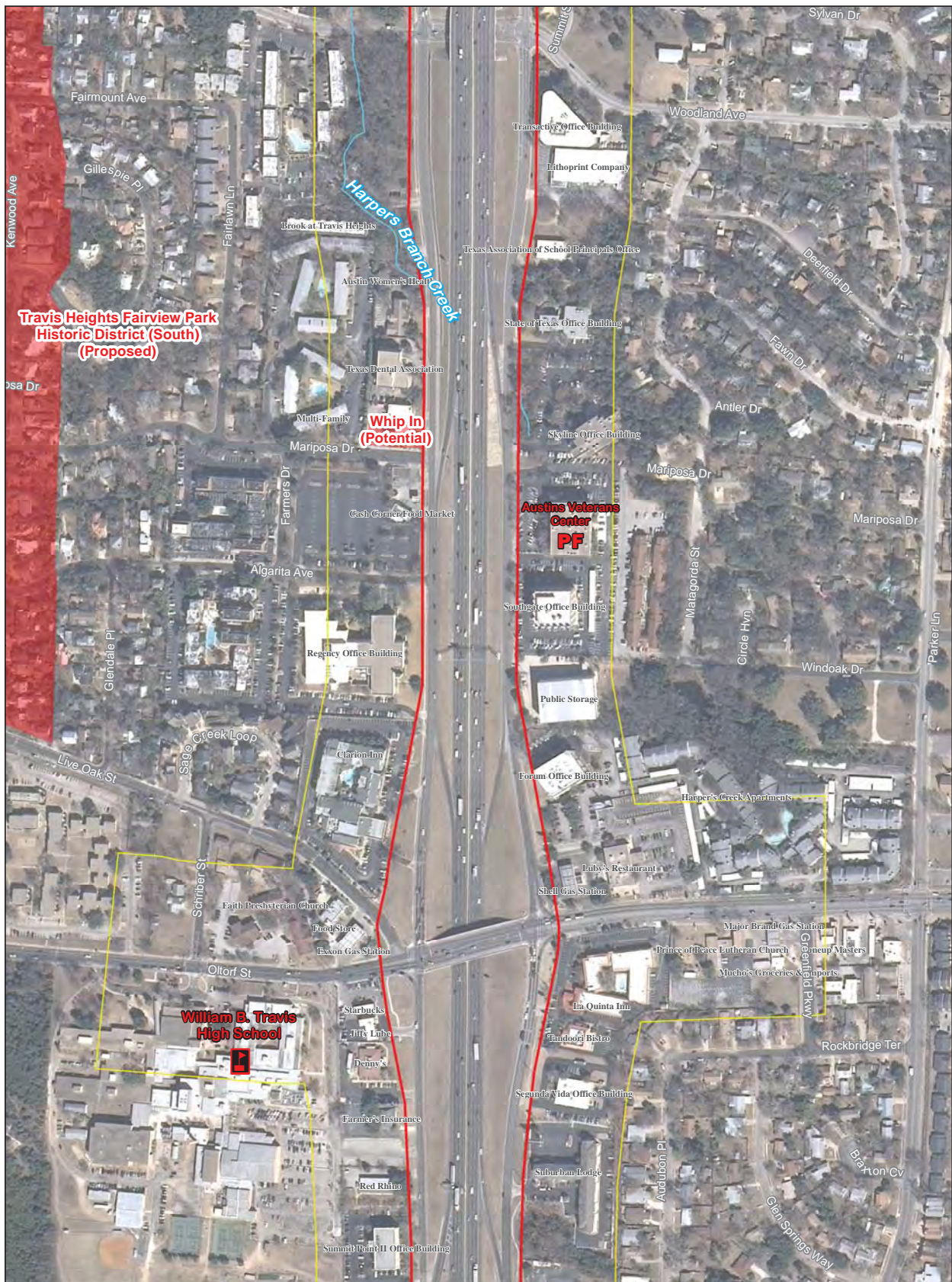


IH 35 CAIP Travis County Phase 2 Implementation Plan

- Right-of-Way
- Study Area
- PF** Public Facilities
- H** Hospitals
- M** Medical Centers
- S** Schools
- Park
- Cemetery
- Historical District/Property

Notable Environmental Factors

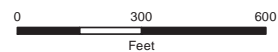




IH 35 CAIP Travis County Phase 2 Implementation Plan

- Right-of-Way
- Study Area
- PF** Public Facilities
- H** Hospitals
- M** Medical Centers
- S** Schools
- Park
- Cemetery
- Historical District/Property

Notable Environmental Factors



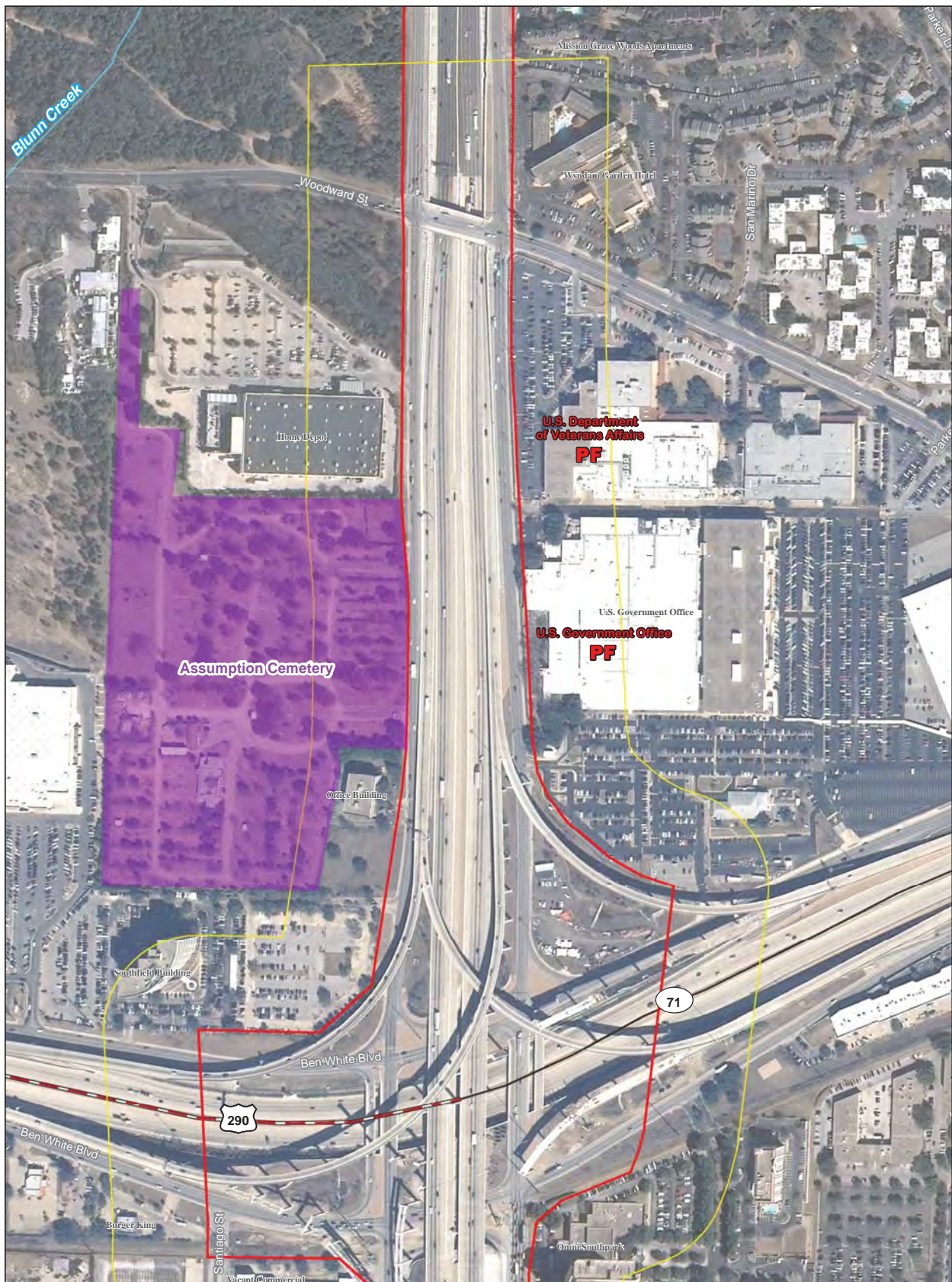


IH 35 CAIP Travis County Phase 2 Implementation Plan

- Right-of-Way
- Study Area
- PF** Public Facilities
- H** Hospitals
- M** Medical Centers
- S** Schools
- Park
- Cemetery
- Historical District/Property

Notable Environmental Factors





Assumption Cemetery

U.S. Department of Veterans Affairs
PF

U.S. Government Office
PF

290

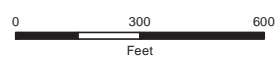
71



IH 35 CAIP Travis County Phase 2 Implementation Plan

- Right-of-Way
- Study Area
- PF** Public Facilities
- H** Hospitals
- M** Medical Centers
- S** Schools
- Park
- Cemetery
- Historical District/Property

Notable Environmental Factors

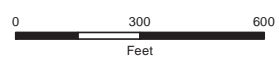




IH 35 CAIP Travis County Phase 2 Implementation Plan

- Right-of-Way
- Study Area
- PF** Public Facilities
- H** Hospitals
- M** Medical Centers
- S** Schools
- Park
- Cemetery
- Historical District/Property

Notable Environmental Factors

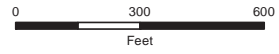




IH 35 CAIP Travis County Phase 2 Implementation Plan

- Right-of-Way
- Study Area
- PF** Public Facilities
- H** Hospitals
- M** Medical Centers
- S** Schools
- Park
- Cemetery
- Historical District/Property

Notable Environmental Factors



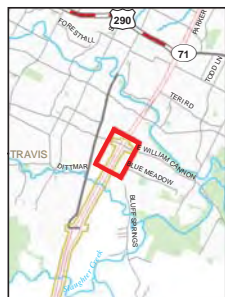


IH 35 CAIP Travis County Phase 2 Implementation Plan

- Right-of-Way
- Study Area
- PF** Public Facilities
- H** Hospitals
- M** Medical Centers
- S** Schools
- Park
- Cemetery
- Historical District/Property

Notable Environmental Factors

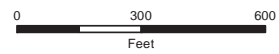




IH 35 CAIP Travis County Phase 2 Implementation Plan

- Right-of-Way
- Study Area
- PF** Public Facilities
- H** Hospitals
- M** Medical Centers
- S** Schools
- Park
- Cemetery
- Historical District/Property









Notable Environmental Factors



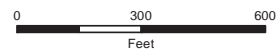


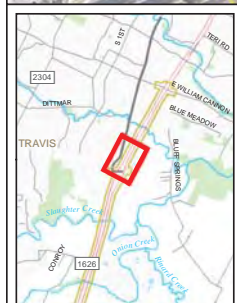
IH 35 CAIP Travis County Phase 2 Implementation Plan

Segment 8 -- Page 2 of 10

- | | |
|---|--|
|  Right-of-Way |  Study Area |
|  Public Facilities |  Park |
|  Hospitals |  Cemetery |
|  Medical Centers |  Historical District/
Property |
|  Schools | |

Notable Environmental Factors

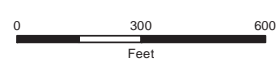




IH 35 CAIP Travis County Phase 2 Implementation Plan

- Right-of-Way
- Study Area
- PF** Public Facilities
- H** Hospitals
- M** Medical Centers
- S** Schools
- Park
- Cemetery
- Historical District/Property

Notable Environmental Factors



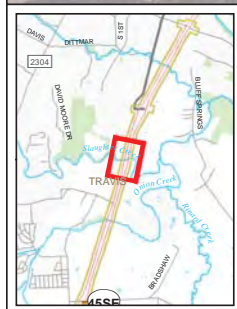


IH 35 CAIP Travis County Phase 2 Implementation Plan

- Right-of-Way
- Study Area
- PF Public Facilities
- P Park
- H Hospitals
- C Cemetery
- M Medical Centers
- S Historical District/Property
- S Schools

Notable Environmental Factors





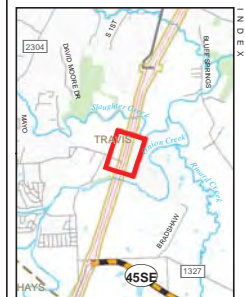
IH 35 CAIP Travis County Phase 2 Implementation Plan

Segment 8 -- Page 5 of 10

- | | |
|-------------------|------------------------------|
| Right-of-Way | Study Area |
| Public Facilities | Park |
| Hospitals | Cemetery |
| Medical Centers | Historical District/Property |
| Schools | |

Notable Environmental Factors





IH 35 CAIP Travis County Phase 2 Implementation Plan

- Right-of-Way
- Study Area
- PF** Public Facilities
- H** Hospitals
- M** Medical Centers
- S** Schools
- Park
- Cemetery
- Historical District/Property

Notable Environmental Factors





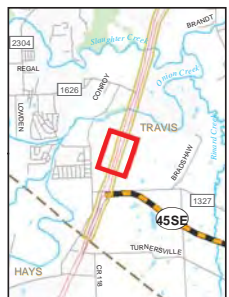
IH 35 CAIP Travis County Phase 2 Implementation Plan

Segment 8 -- Page 7 of 10









- | | |
|-------------------|------------------------------|
| Right-of-Way | Study Area |
| Public Facilities | Park |
| Hospitals | Cemetery |
| Medical Centers | Historical District/Property |
| Schools | |

Notable Environmental Factors

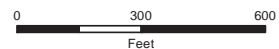




IH 35 CAIP Travis County Phase 2 Implementation Plan

- | | |
|---|--|
|  Right-of-Way |  Study Area |
|  Public Facilities |  Park |
|  Hospitals |  Cemetery |
|  Medical Centers |  Historical District/
Property |
|  Schools | |

Notable Environmental Factors





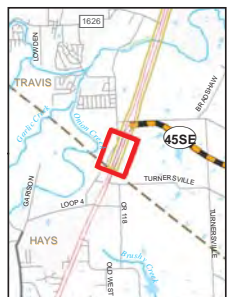
IH 35 CAIP Travis County Phase 2 Implementation Plan

Segment 8 -- Page 9 of 10










- | | |
|-------------------|------------------------------|
| Right-of-Way | Study Area |
| Public Facilities | Park |
| Hospitals | Cemetery |
| Medical Centers | Historical District/Property |
| Schools | |

Notable Environmental Factors





IH 35 CAIP Travis County Phase 2 Implementation Plan

- | | |
|---|--|
|  Right-of-Way |  Study Area |
|  Public Facilities |  Park |
|  Hospitals |  Cemetery |
|  Medical Centers |  Historical District/
Property |
|  Schools | |

Notable Environmental Factors

